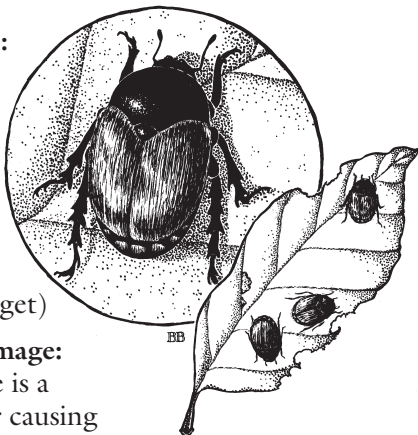


## Japanese Beetle

*(Popillia japonica)*

### Affected species:

Roses, Birches,  
Purple Plums,  
Cherry, and  
Dogwoods  
are favorites  
(any plant with  
a succulent leaf  
is a potential target)



### Symptoms/Damage:

The adult beetle is a voracious feeder causing skeletonization of leaves, while the grub stage can destroy large areas of turf.

**Treatment:** Control is best achieved in the larval stage by treating turf with lawn care products. Adults can also be suppressed with repeated spray treatments. Pheromone traps are not recommended—they attract more beetles than they kill.

**Timing of Treatment:** late June – September

**Tree & Shrub Preservation • Turf & Soil Care**

Lebanon 603.448.4800 • Meredith 603.279.7400

New London 603.526.4500

Woodstock 802.457.5100 • Toll Free 866.683.6222

[chippersinc.com](http://chippersinc.com)