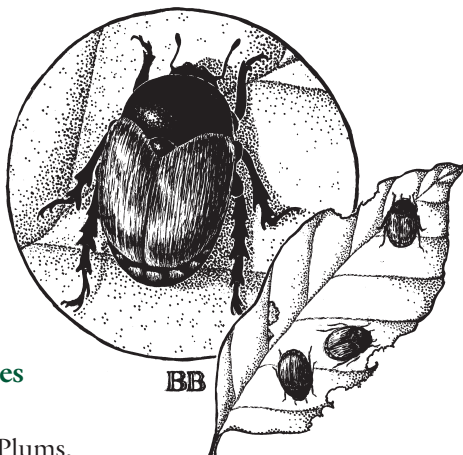


## Japanese Beetle

*Popillia japonica*

### Description

The adult beetle is about half an inch long with bronze and metallic green coloring.



### Affected Species

Roses, Birches, Lindens, Purple Plums, Cherry, and Dogwoods are favorites, however almost any plant with a succulent leaf is a potential target for this hungry beetle.

### Symptoms & Damage

The adult beetle is a voracious feeder causing skeletonization of leaves. At the grub stage, they eat turf roots, which can cause extensive damage to your lawn.

### Prevention & Treatment

Control is best achieved in the larval stage by treating your lawn during the summer or fall to reduce the beetle population for the following year. Adult beetles can be suppressed now with repeated organic or traditional spraying. Pheromone lures are not recommended – they attract more beetles than they trap.

*Our Consultations Are Always Complimentary*

*Concord NH • Lebanon NH • Meredith NH  
New London NH • Woodstock VT*

*Toll Free 866.683.6222 • Web [chippersinc.com](http://chippersinc.com)*

*Accredited NH Better Business Bureau, A+ Rating & Tree Care Industry Association*